



International Baccalaureate®
Baccalauréat International
Bachillerato Internacional



Renaissance
College
啓新書院

Back to School Night 2011



**Renaissance College
Primary School
Year 1
31st of August**



The PYP Framework



Year 1 Program of Inquiry

6 Units:

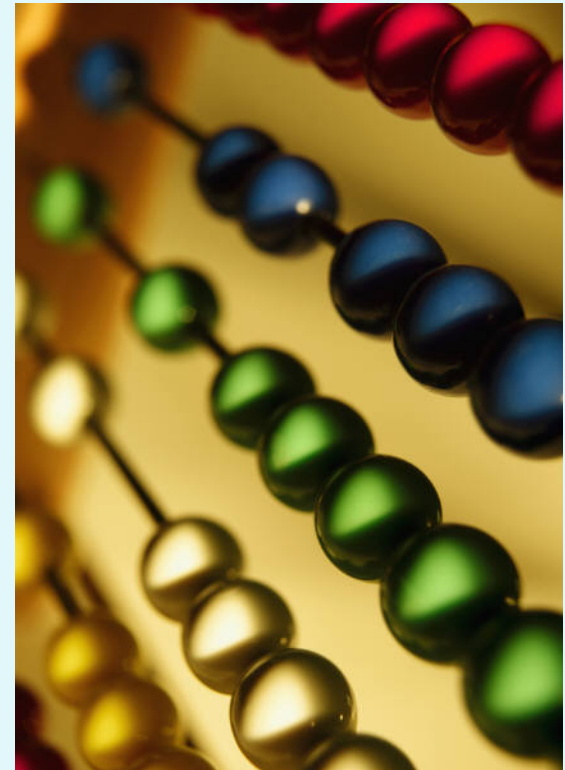
1. Who we are - Friendships
2. How we organize ourselves - Communities
3. How the world works - Materials
4. Sharing the planet - Living Things
5. How we express ourselves - Imagination
6. Where we are in place and time - Personal Histories



Maths:

5 Strands

- Number
- Pattern and Function
- Data Handling
- Measurement
- Space and Shape



Literacy:

Strands:

- ❖ Oral language
- ❖ Written language
- ❖ Reading and writing
- ❖ Visual language



Language learning is encompassed throughout all areas of the curriculum especially in our Units of Inquiry.

Timetable

Central Idea:

Friendship enriches our lives and requires nurturing in order to develop.

Lines of Inquiry:

- How friends are made and kept
- Why friends are needed
- Characteristics that develop healthy friendships

Monday 29.8	Tuesday 30.8	Wednesday 31.8	Thursday 1.9	Friday 2.9
Morning Meeting Calendar Phonics Ss Song: I am Special L.P: Knowledgeable Phonics Act	Morning Meeting Calendar Phonics Aa Song: I am Special L.P: Knowledgeable Phonics Act	Morning Meeting Calendar Phonics Tt Song: I am Special L.P: Balanced Phonics Act	Morning Meeting Calendar Phonics Ii Song: I am Special L.P: Balanced Phonics Act	Morning Meeting Calendar Phonics Pp Song: I am Special L.P: Risktaker Phonics Act
Music	PE	PE	Literacy: 1. Ms Dilky - Making Friends Story response 2. Sound and letter knowledge 3. Play	Poetry Illustration
Morning tea				
Jacqui to cover -Red feelings hat	ART	UOI: Essential Agreement signing friendship brainstorm	MATH - Longest/shortest name Pets	Literacy: 1. Ms Dilky - Making Friends Story response 2. Sound and letter knowledge 3. Play
MATH - Longest shortest name Pack Up Story	ART	Literacy: 1. Ms Dilky - Making Friends Story response 2. Sound and letter knowledge 3. Play Pack Up/Story	Pack Up/Story	Pack Up/Story
PE	ART	Library	Chinese	Story /Pack up
Lunch				
Studio time				

Routines

- Our Daily Routine
- Library
- PE, Art and Music
- No hat = Play undercover
- Healthy lunches/snacks
- Lots of water
- Label EVERYTHING!
- Essential agreements
- Scholastic
- Sleep



Home Learning Guidelines

- In our aim to keep home learning a worthwhile experience for children, please note the following guide:

Year Level	Home Learning time / day
Years 1 and 2	20 minutes
Years 3 and 4	30 minutes
Year 5	45 minutes
Year 6	1 hour

Year 1 - Home Learning

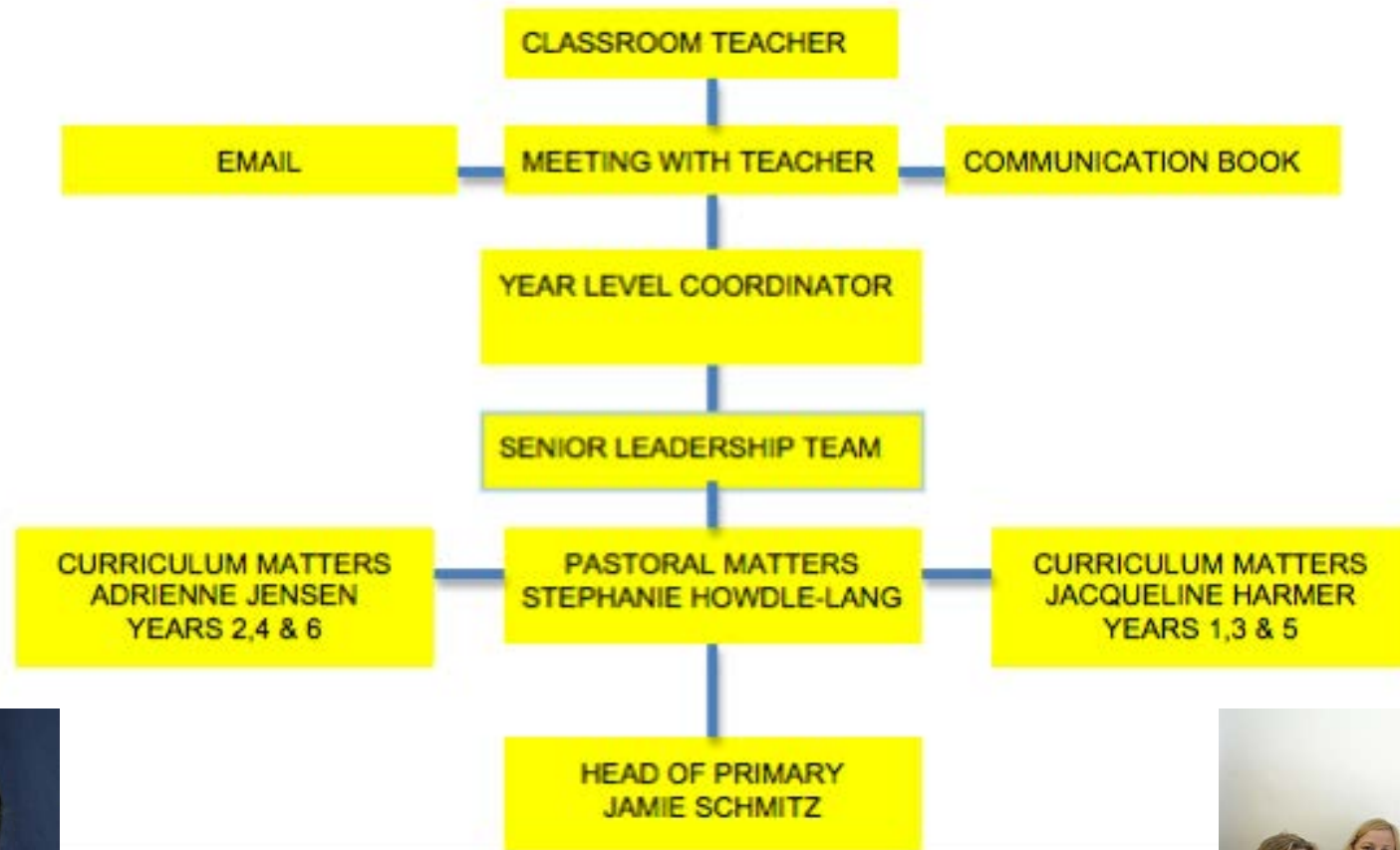
- **Home Readers**
- **Unit work**
- **Poetry Books**

Celebrations in school

- No birthday parties during school time.
- ‘Parties’ should be held outside the school day.
- Lots of celebrations through out the year e.g Chinese New Year, 100th day of School.



Lines of Communication



Conferencing with the teachers

- Email length and ‘take a breath’ before sending
- Response time
- Appropriate times to approach teachers
- Discussions with other parents
- Share the ‘good news’ not just the ‘bad.’
- Chinese Interpreter
- Parent teacher conferences next (November)

School uniform

- Appropriate dress
- PE Uniform
- Foot wear
- Hats
- House t-shirts
- LABEL EVERYTHING!!!!!!



School bags:

- **Large enough to fit:**
 - **Communication bag**
 - **Snack bag (in a bag with handles)**
 - **Water bottle**
 - **Lunch (if bringing home lunch)**
 - **Hat**
 - **Bus tag**

Essential Agreement

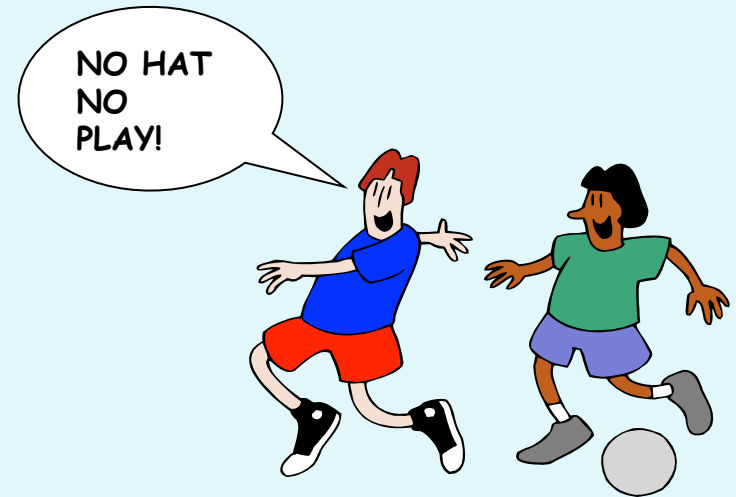


BUMBLEBEE ESSENTIAL AGREEMENT

- + We put up our hand when we want to speak.
- + We use listening ears.
- + We listen to the Teachers.
- + We look at the person who is talking.
- + We do not wear hats in the classroom.
- + We use gentle hands.
- + We concentrate.
- + We play with **EVERYONE!**
- + We share.
- + We cooperate. (Work together)
- + We use our manners.
- + We try our best!
- + **WE HAVE FUN!!**

At RCHK we ...

- **respect ourselves**
- **respect others**
- **respect the environment**



DON'T FORGET NO HAT NO PLAY - please remind your child to bring a hat.

Attendance of School and Events

- Email teacher
- If bus person email bus company linus@kcm.com.hk and Mrs Chima.
- It is important to note that social events organized by Secondary students *are solely for Secondary students.* Primary students are not able to attend.

Primary Learning Enhancement Team

Work in collaboration with teachers to identify and support the specific learning needs of students.



Asma Syed



Charlotte
Matthews



Therese
Owen



Anita McDonald
Pang



Christin
Topper

Education Assistants

Full Time - Michelle Fu, Persephone Yuen, Cecelia Ho, Vidya Madhavan, Rachel Chow (on maternity leave until Nov 28th)

Part Time – Lara Figgins, Jenny Bates



Meet the teachers

Kellie Dufty

Louise Shaw

Visual Arts - PYP

Through **visual arts** your child will get to **explore** and use a wide variety of **materials, tools** and **media** and they will draw on increasing knowledge and skills to express their **ideas, observations** and **feelings**.

Your child will be **exposed** to and will **respond** to **artifacts** and **artworks** of varied **cultural origins**, and they will become familiar with the process of **reflection** and how to appreciate their own and others' artworks.



pattern

texture

Year one



colour



Year 1 PYP MUSIC

In Music we will be collaborating with two units of inquiry.

- Who We Are - Friendships
- How The World Works - Materials
- How We Express Ourselves - Imagination

The aim of Music in the PYP is to enable students to communicate in ways that go beyond their oral language abilities.

In creating, students use their imagination and musical experiences to organize sounds that communicate specific ideas and moods.

In Responding, students are given the opportunity to respond to different styles of music.



Jennifer Venance
venancejb1@rchk.edu.hk

Feel free to arrange a time to come in and observe a music session– you are always welcome!

Year 1 Physical Education

In PE we will be collaborating with two units of inquiry.

- Who We Are with Adventure Challenge Games.
- How We Express Ourselves with Movement Compositions.
- Swimming Dates: March 5th - April 27th

The aim of PE in the PYP is to develop transdisciplinary skills promoting physical, intellectual, emotional and social development.

PE at RCHK provides opportunities for participation in physical activities that contribute to long-term healthy living.



**Sarah Robertson-
Burd**

**robertsonburds1@
rchk.edu.hk**

Important reminders!!

- **Spare clothes**
- **3 x passport photos**
- **Email addresses**
- **Family photos**
- **Half day – home lunch**
- **Library bags**

Have a Happy Year!!!

