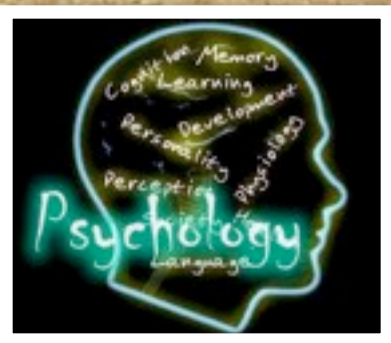


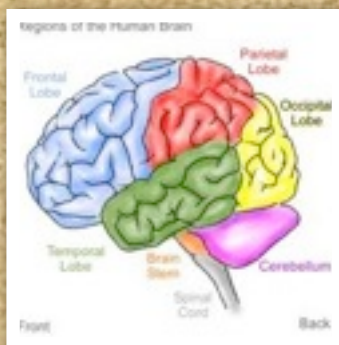
IB PSYCHOLOGY

The scientific study of mental processes and behaviour and how these are affected by internal processes and the environment.



To achieve a SCIENTIFIC study of human behaviour:
We will analyse and evaluate relevant research

We will examine MENTAL PROCESSES such as:
Attention, memory, emotion, and attitudes.



We will also investigate INTERNAL PROCESSES that could influence behaviour like:
Hormones, neurotransmitters and genes.

Plus, we will consider ENVIRONMENTAL INFLUENCES such as:
Parenting, stress, exercise, peers and culture.



WHY SHOULD I STUDY PSYCHOLOGY?

I'M PLANNING A CAREER THAT INVOLVES WORKING WITH PEOPLE

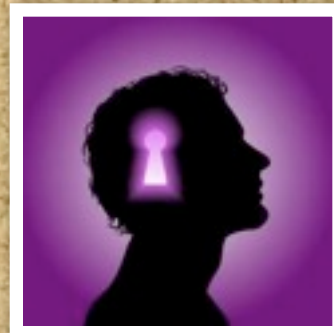


I AM CURIOUS ABOUT WHY PEOPLE BEHAVE THE WAY THEY DO

I LIKE TO WRITE FOCUSED ESSAYS

I'M A GOOD LISTENER

I'M A CRITICAL THINKER



I WANT TO IMPROVE MY SKILLS IN WORKING WITH OTHER PEOPLE

I LIKE TALKING WITH OTHERS ABOUT FEELINGS

I ENJOY THE STUDY OF THE HUMAN BODY INCLUDING BIOLOGY AND HOW IT INFLUENCES BEHAVIOR



I'D LIKE TO BE A PARENT ONE DAY



STANDARD AND HIGHER LEVEL

CORE UNITS



BIOLOGICAL LEVEL OF ANALYSIS:

How does our body effect our behaviour?
How can this be demonstrated?



COGNITIVE LEVEL OF ANALYSIS:

How do we understand cognitive processes such as perception, language and decision-making?



SOCIOCULTURAL LEVEL OF ANALYSIS:

How do culture and the environment influence behaviour?
How does sociocultural research differ from biological and cognitive research?



OPTIONS



STANDARD LEVEL: 1 option – developmental psychology

HIGHER LEVEL: 2 options – developmental psychology and one other

ASSESSMENT

PAPER 1

STANDARD AND HIGHER LEVEL CORE
CONTENT

2 Hours

PAPER 2

SL: 1 hour on option

HL: 2 hours for both options

PAPER 3

HIGHER LEVEL ONLY

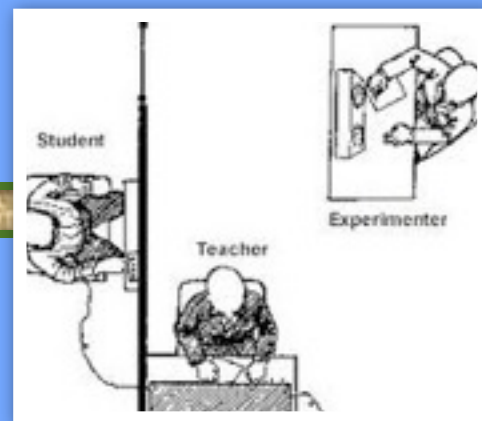
1 Hour: Qualitative research methods

INTERNAL ASSESSMENT

HIGHER LEVEL

20%

Modification of a simple experimental study, and application of inferential and descriptive statistics



STANDARD LEVEL

25%

Replication of a simple experimental study, and application of descriptive statistics